

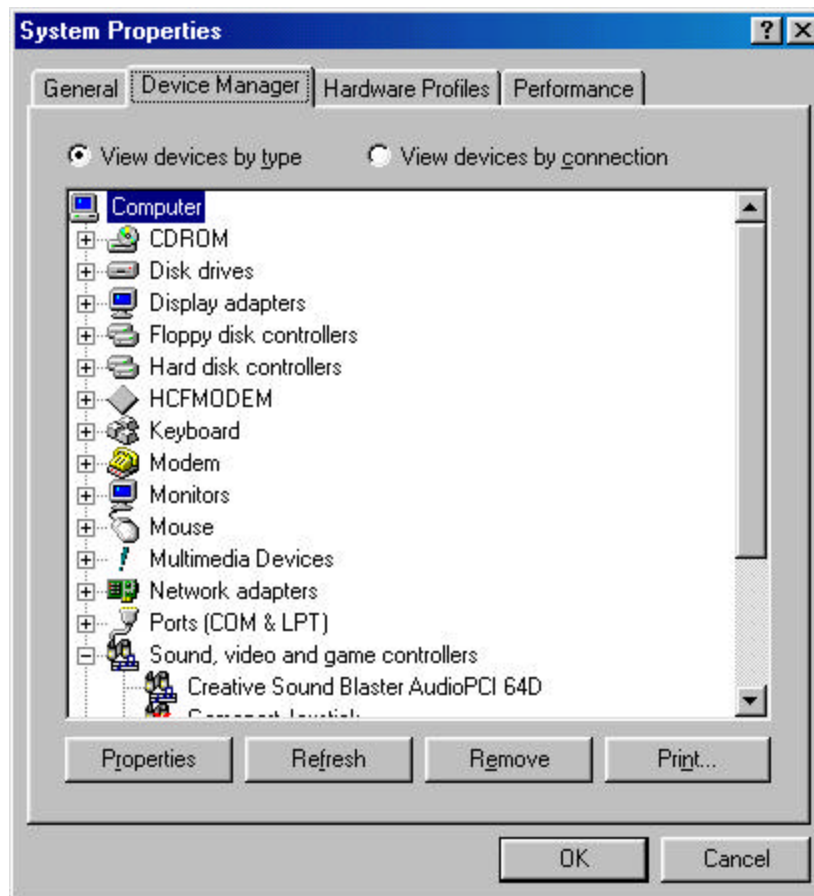


RITEC Application Note

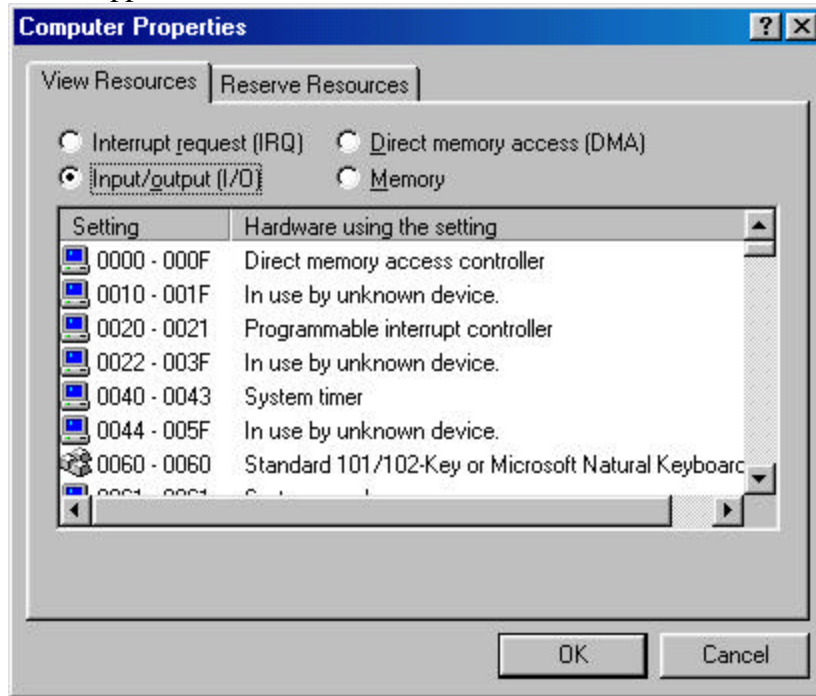
Installation of the ADAC-4801/DT-2801 Data Acquisition board

The ADAC-4801 or Data Translation DT-2801 card normally uses addresses 2EC Hex and 2ED Hex as default addresses. Because the card is not plug-and-play compatible, it is possible that a new plug-and-play peripheral can hijack these addresses and cause a conflict. Occasionally these addresses are used by multimedia plug-and-play peripherals such as a sound card or a game card. To properly install these cards without causing an address conflict, it is necessary to do the following:

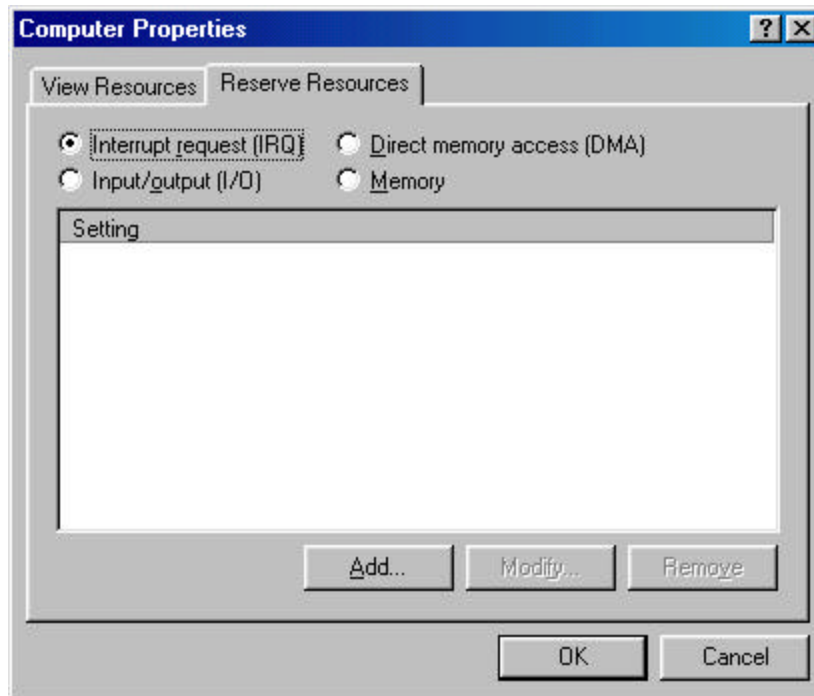
Open the device manager by clicking on the System icon in the Control Panel. You should get a picture like the following will appear:



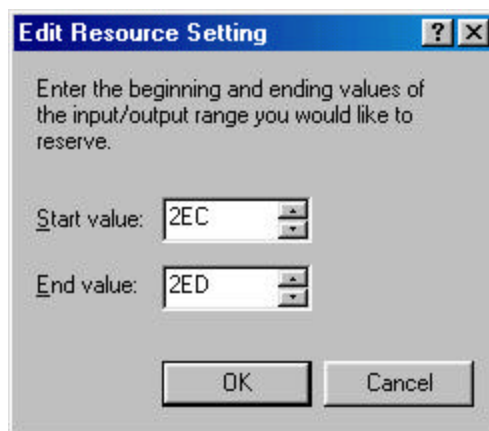
highlight on the Computer Icon as shown above and click on the properties button. The following screen will appear:



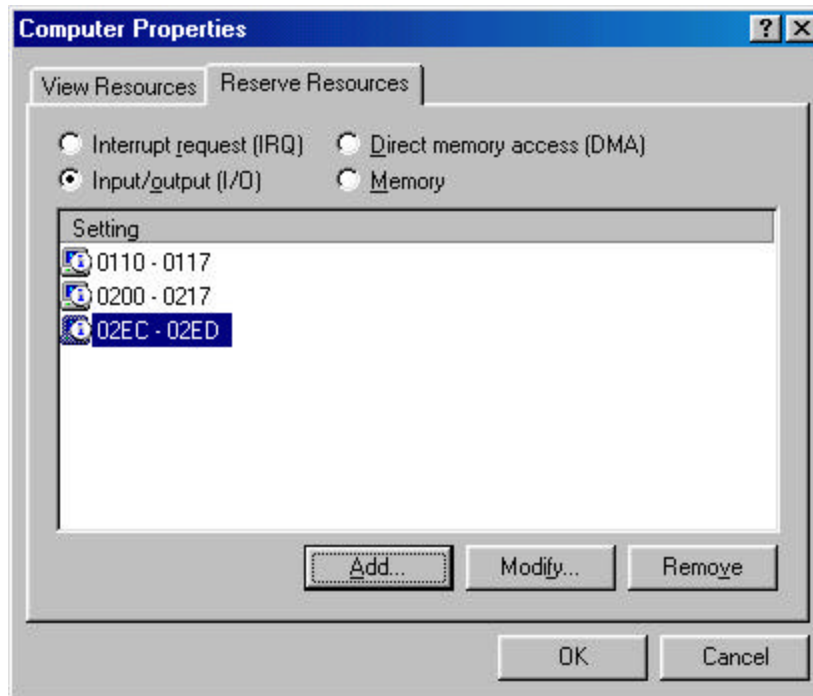
Click on the I/O button as shown above. The display will change to show the I/O addresses already in use in your computer. Usually the range of 2E0Hex to 2F0 Hex is open and can be used by the ADAC-4801 board without difficulty. If the addresses are open you can reserve them for the ADAC board by following the procedure outlined below. This will prevent future peripherals from hijacking the addresses. Click on the Reserve Resources Tab to obtain the following screen:



Click on the Add button and reserve from 2EC to 2ED Hex as shown below:



This will change the System Properties screen to look like:



Click OK to finish.

This should reserve the addresses that are required for the ADAC-4801 card.

To setup the PCLAB follow the procedure below if you have the original installation diskette:

- 1) Copy the file PCLDRV.SYS to the root directory. The config.sys file must be modified by adding `device= c:\bc7\ram\pcldrv.sys`. The other library file PCCBALIB.LIB is required if you are going to modify the program using Microsoft Professional Basic.
- 2) If the default addresses are not open but there is a block of I/O addresses open at another location then it will be necessary to change the base address of the ADAC board to a range which does not conflict with other devices. To do this, you will need to move jumpers on the ADAC board. You will also have to run the PCLSETUP program to notify PCLAB of the address change. PCLSetup will give an error message unless the config.sys file has been modified as discussed in step 1. It will give a setup screen which will appear as the following:

